

The Lions Eye

A Publication of the
Lions Eye Foundation of California-Nevada, Inc.



Spring 2012

Referring a Patient - One Club's Rewarding Journey



Barbara Knox and Marie Rangel

In the spring of 2010, Maria Rangel and her family were new clients of the Emergency Housing Consortium (EHC), a local non-profit in San Jose that helps people find sustainable and safe housing. Even with her impaired vision, Mrs. Rangel was the sole income earner supporting her family that includes her husband and four children. Her deteriorating vision, which started around age ten, was compromising her ability to sustain employment. Maria desperately needed an eye exam.

The staff at EHC contacted Lion Ray Lancon and Lion Al Knox of the Cupertino DeAnza Lions Club. Up until this referral, the club's primary vision service had been providing free exams and glasses to qualified adults and students in their community.

Lion Al, and his wife Barbara, contacted Maria to schedule an appointment for her and her son (who also qualified) to have an eye exam. The family got good and bad news as a result of the two exams. The good news was that Maria's son could be helped with corrective lenses. The bad news was that Maria's condition was more complex and the medical professional conducting the exam concluded that corrective lenses alone would not help Maria. She had an eye condition called

keratoconus. This condition causes the cornea to change shape from a normal rounded curve to a steep cone. Keratoconus causes distorted vision, multiple images, light sensitivity and a pronounced decrease in visual acuity. Maria would need eye surgery to restore her vision.

Lion Al contacted LEF, received the necessary forms and by referring Maria began a process the club had never participated in before. Through the combined efforts of many club members and spouses, multiple trips to San Francisco were made for appointments.

In September 2011, Dr. Rishi Doshi (chief resident) and Dr. Karen Oxford (cornea specialist) performed a penetrating keratoplasty for Mrs. Rangel. The three-hour cornea transplant surgery gave Maria a new cornea and restored vision. Her Lion friend Barbara was there to support her throughout the entire process. Needless to say, the Cupertino DeAnza Lions had found a partner in the Lions Eye Foundation to assist them in their community service.

Exiting the parking garage the day after surgery Maria said, "I can see that street sign there!" and looking up she cried, "Oh and the airplane! I can see that airplane in the sky there!" She continued to exercise her newly restored vision all the way down the highway to San Jose.

One might say that a miracle had occurred. The true testament to Lions service to their community was the sustained efforts of caring Lions and their spouses who made themselves available. That commitment made the difference. Maria can attest to that.

"She was literally dancing around the kitchen, floating from counter to stove and back again." This was how Barb described Maria's first weekend home after her eye surgery. As a result of the successful surgery and recovery, Maria is able to work again, having started a catering business that delivers home made tamales to customers in the San Jose area. As Barb explained, "Not only is she able to work again, she's just so happy, and those tamales, they're delicious!"

The close relationship between Maria and her family and the DeAnza Lions members has continued. They recently attended the birthday party of Maria's 11-year-old daughter. All those involved in Maria's journey to improved vision are now close friends. This friendship is a testament to the lasting personal results of individuals volunteering their time to help another person in need, and the good work of Lions!

Mission Statement: "The Lions Eye Foundation preserves and restores the gift of sight by providing free ophthalmic examinations, operations and medications to the less fortunate members of our community."

The Lions Eye

ANNUAL REPORT Financial Overview

Fiscal Year Ending March 31, 2012



	General	Restricted*	Sum	% of Prior Year
EXPENSES				
Administration	\$ 11,770	\$ -	\$ 11,770	120.9%
Resource Development	\$ 88,800	\$ -	\$ 88,800	100.9%
Program Services	\$ 429,230	\$ 990	\$ 430,220	105.2%
	\$ 529,800	\$ 990	\$ 530,790	106.9%
INCOME				
Club Dues	\$ 92,810	\$ -	\$ 92,810	98.7%
Donations, Mem. & Gen.	\$ 55,720	\$ -	\$ 55,720	90.9%
Helen Keller	\$ 17,800	\$ -	\$ 17,800	56.4%
Life Members	\$ -	\$ 10,500	\$ 10,500	70.9%
Bequests	\$ 86,860	\$ -	\$ 86,860	171.9%
Interests & Dividends	\$ 109,720	\$ 93,460	\$ 203,180	112.6%
Other	\$ 9,320	\$ -	\$ 9,320	98.7%
	\$ 372,230	\$ 103,960	\$ 476,190	
Income without Restricted Interest**			\$ 382,730	111.0%

NOTES

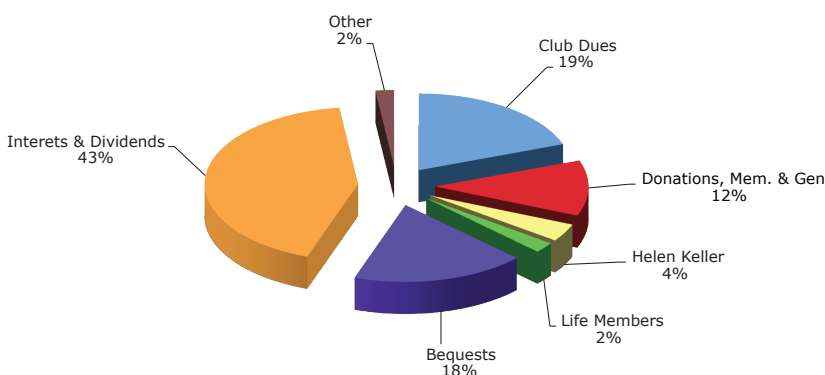
The **Restricted Account*** covers direct patient expenses (Hospital, Pharmaceuticals, and Motel) for patients 18 years or younger. The General Account covers all other administrative expenses, except for direct bank charges for a separate bank account.

The reason that the restricted account expenses are so low is because of the California insurance program for children that covered a majority of the patients.

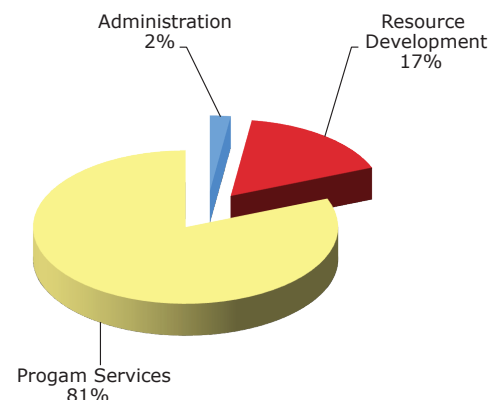
The **Restricted Account**** interest can be transferred to the General Account after three years. Thus the bulk of the \$93,460 stays restricted and is not available until FY'14.

Program Services for the General Account include direct patient expenses, equipment and library purchase for the dedicated residents at CPMC performing surgeries on our patients, and our LEF contributions to the hospital. Because of this direct contribution, CPMC provides space and pays for the Program Coordinator, the Administrative Assistant, and additional staff as needed.

FY '11 INCOME



FY '11 EXPENSES



LEF Focus, Lead Trustees and Need for Advisors

To fully understand the structure of an organization it can be helpful to look at its mission statement and ask these simple questions. What are the organizations goals and objectives and who do they plan to serve? With the Lions Eye Foundation the answer is very clear - to provide the best possible ophthalmology care for those who can least afford it.

While this may be simple enough, providing and managing resources for this daunting task takes the concerted effort of many people. The LEF has members from varied backgrounds and with different talents. But the one thing they all have in common is their passion for helping others, and through the LEF they have found a way to focus their passion into positive results. In the more than 50 years the LEF has been in existence members of LEF have helped countless thousands of individuals to experience a better quality of life by being “given the gift of sight.”

The LEF began in 1960 with a small group of Lions in the San Francisco Bay Area with the determination to help others. At its inception, the LEF, meeting on a monthly basis, began working to lay the groundwork for the future organization. Today, the LEF, which now meets on a quarterly basis in various cities throughout California and Nevada, has evolved into an organization consisting of over 33 trustees and 33 advisors representing member clubs in nine Lions districts. Usually, at the quarterly get-together there are separate meetings of the Executive Committee, the Long Range Planning Committee, and possibly investment, budget, bylaws, and other special committees. There is also a meeting of the Advisory Council, and finally, a meeting of the Board of Trustees which is responsible for conducting and managing the affairs of the organization.

In searching for ways to provide better and more efficient services to those we serve, the Board of Trustees implemented the concept of the Lead Trustee. The Lead Trustee, oftentimes the Trustee with the most experience, will oversee Trustees and Advisors in his or her district, helping to coordinate effective presentations to various clubs and/or evaluating patient referrals to be forwarded to LEF. Advisors, who are considered Trustees in training, should have served at least one year in the Advisory position before being elected a Trustee. It is also a Lead Trustees' responsibility to summarize, and report on a quarterly basis, to the Board of Trustees the activities the Trustees and Advisors have been engaged in while representing the Lions Eye Foundation. These are important changes within the organization. It is anticipated that by implementing these changes the LEF will be better able to meet the needs of those we serve.

An example of this is the referral process. At present approximately 70% of all applications submitted to LEF on behalf of patients are incomplete. There are many reasons for this. Some patients do not meet the eligibility requirements, some patients are referred directly by clinics or doctors, and sometimes all required information has not been included. Mark Paskvan, Program Coordinator, and Administrative Assistant Michelle Lommen at CPMC both spend many hours reviewing applications that are often rejected and are returned to the submitting club. The club on the other hand may not always understand why the referral is being rejected. This is where the Lead Trustee's experience comes in. All rejected applications will funnel through them and they will coordinate and work with the other Trustees and Advisors and with member clubs to help alleviate problems before complete applications are returned to the LEF. All Trustees and Advisors are equally important. Better training and more coordination within their district, especially for Advisor's who are future Trustees, will result in a more efficient referral process and lead to more patients being evaluated at the Lions Eye Foundation Clinic.

At the present time the Lions Eye Foundation has a need for more Advisors. We are looking for several dedicated Lions who would like to become Advisors and who can commit to attending quarterly meetings and visiting 5-6 clubs within their district

(continued on back page)

LEF's Residents Share Their Stories



Alan Lowinger, MD grew up just outside of New York City. He graduated from the University of Pennsylvania, and completed medical school at UMDNJ-Robert Wood Johnson Medical School .

As a medical student, Alan worked as a primary care provider at a clinic for uninsured Camden, NJ residents. As part of the Student Scholar Program, he spent significant time volunteering in charity hospitals in India. He was also co-President of the International Health Interest Group, raising money for health care needs abroad and helping to organize a for-credit ten-lecture elective on important international health matters.

Alan is very excited about the role of ophthalmology in delivering permanent, inexpensive, life-altering care to those in need - both in the US and abroad. For him, California Pacific Medical Center offers an amazing mix of surgical experience, diverse pathology, down-to-earth attending physicians who love to teach, along with emphasis on International Ophthalmology and Lions charity care.

Alan is most content in the proximity of a yoga mat. If he were not a resident, he would, without a doubt, be traveling.

Dr. Lowinger will start as Chief Resident at the Lions Eye Clinic on July 1, 2012.

Meet John Posey, LEF's Incoming 2nd Vice President



John Posey

John Posey was born in San Rafael, California where he attend school, graduating from San Rafael High School. He continued his education at the University of California, Berkeley, receiving a Bachelor's Degree in political science with a double minor in history and economics. After graduation, he entered Hastings College of the Law and received a Juris Doctor Degree in 1971 and became a member of the California State Bar.

John worked as a trial lawyer for two years, then, for the next 24 years John worked in the Marin County District Attorney's Office prosecuting high profile criminal cases. He then left to open his private practice in San Rafael specializing in criminal and civil litigation. John is currently a member of the Marin County Alternate Defender's Peer Review Committee, a panel of five attorneys who oversee the appointment and performance of court appointed attorneys in criminal cases. John not only volunteers his services to Lions, but also to youth activities. He has served as President and Treasurer of the Novato/San Marin Pop Warner Football Program and spent five years coaching Little League Baseball.

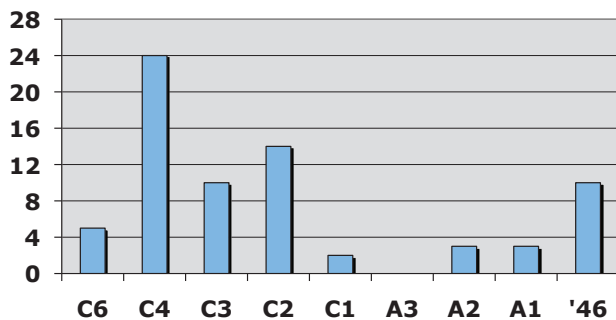
John joined the Novato Lions in 1977, where he has served as Club President four times, held all of the other offices in the club, was student speaker chair, and has been recognized as Lion of the Year. In District 4-C2, he chaired the convention committee, was zone and region chair, cabinet secretary, cabinet treasurer, and was elected District Governor. He has received four International Certificates of Appreciation, along with eight certificates of appreciation from District Governors. John has also been honored with a Progressive Melvin Jones, a Helen Keller Fellow, and a Harry Aslan Fellow. In 2009, he was appointed as an advisor with the LEF and was elected trustee in 2010. He has served on the long range planning committee and has contributed articles to this publication.

"I believe in fostering and strengthening the strong relationship the LEF currently has with its districts in California and Nevada, and with CPMC." John states, "that with the active participation of advisors and trustees, the LEF will continue to grow and become an even more visible presence in our districts." John also believes that the partnership between CPMC and the LEF is crucial. "This continuing and evolving relationship allows us to provide eye care and continue our mission as knights for the blind."

John, and his wife Mary Pougiales, also an attorney, live in Novato. Between them they are the parents of a son, two daughters and three grandchildren.

Statistics and Leverage

**Number of Patients by District
from 1/1/12-3/31/12**



Total number of Patients ----- 71
 New Referrals ----- 97
 Actual Dollars Spent ---- \$111,850
 Estimated Value ----- \$1,304,000

LEVERAGE 11.6:1

Fast Facts

- The most prevalent surgery was for cataracts
- There were 16 surgeries for retina, cornea or strabismus problems that would have cost \$25,000 - \$35,000 each
- The youngest patient was 9 years old, oldest was 72 years old
- There were also 40 Laser Procedures with an estimated value of \$60,000 (incl. in \$'s above)

Acknowledgements and Thanks

January - March 2012

New and Progressive Helen Keller Fellows:

- Tom Stark (Diamond)

New Life Members:

- Lorraine Irving

Memorial Donations (at least \$200)

- Sam French • Robert Marshal • Don Stanaway • Sally Territo-Wong • Zeiter Eye Medical Group

General Donations (at least \$200)

- Barbara Anger • Geneva Excelsior Lions Club • Yreka Host Lions Club (Milton Debhur)

Donations (at least \$1,000)

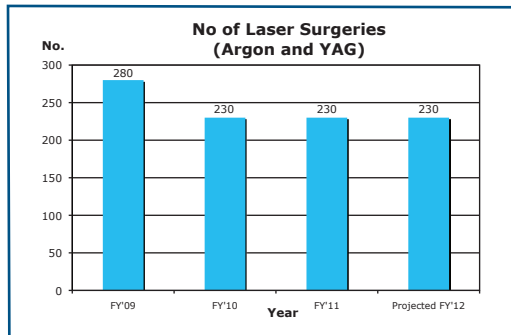
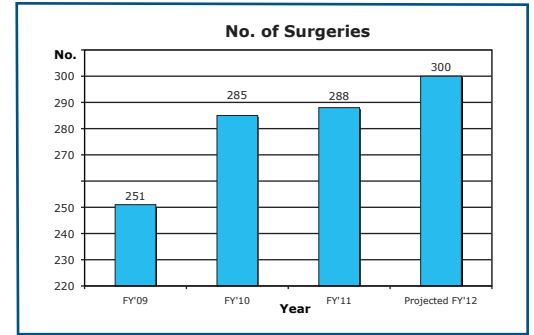
- Carola Abrams • Unicorn Dance Band • North Tahoe Lions Club

Total Received:

General Fund	\$13,239
Restricted (Life) Fund	\$700

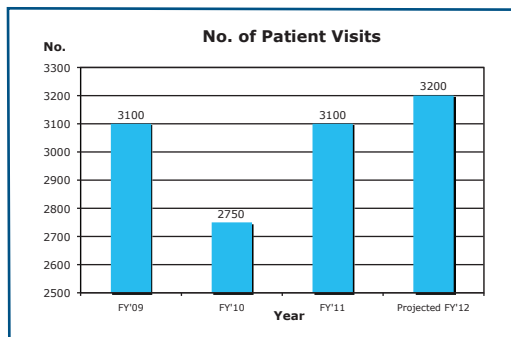
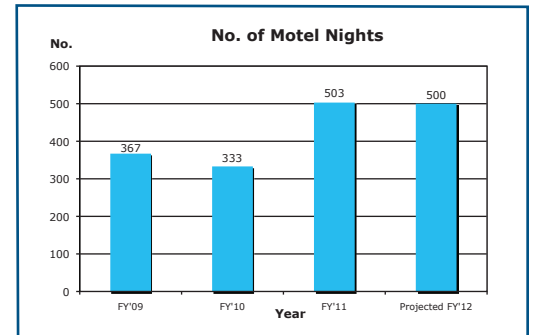
Annual Report For Year 2011

For FY'11, the number of patient surgeries has stayed about the same as for FY'10. We can again say that this has been the busiest year in our 50 plus year history. Basically, under current guidelines, we have reached a capacity limit. Typically, it now takes 2-3 months for a first appointment. After that, depending on the type of eye problem, surgery is scheduled anywhere from 1-4 months out.



The number of Laser Surgeries has decreased due primarily to a reorganization of the Laser clinic. The number of patients per day is limited and an attending retina doctor must be present for all laser procedures. Next year is expected to be the same.

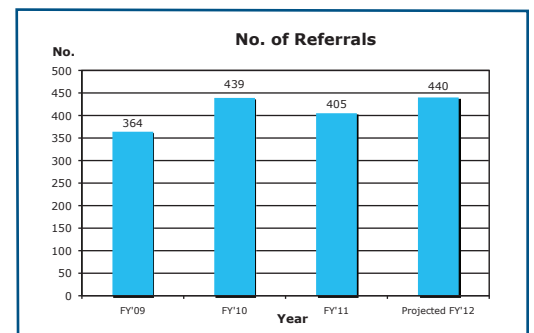
Motel nights have increased significantly due to and a high number of patients from the Las Vegas area and due to more complex procedures requiring multiple nights.



Although the number of surgeries has not increased, patient visits have actually increased. One major reason is that, besides surgeries, about 45 Avastin injection procedures per month are performed as part of Retina services. These typically require multiple visits.

Referrals were down from the prior year, primarily due to an unexplained decrease in the 4th quarter.

From a financial perspective, we again showed a loss. In FY'10 expenses exceeded income by \$53,860 or 10.8%. In the fiscal year just ended, there was a moderate change. Expenses exceeded income by \$54,600 or 10.3%. This can be attributed to the decreases in donations, Helen Keller, and Life Memberships. We again anticipate having to draw money from investments.





P.O. Box 7999
San Francisco, California 94120
www.lionseyeca-nv.org
415.600.3950

Officers & Key Personnel

President – Steve Laden
First Vice President – Fred Sommer
Second Vice President – Dennis Noble
Treasurer – Leila Chinn
Secretary – Jan Ahearn
Executive Director – Don Stanaway
Program Coordinator – Mark Paskvan

Contributors

Editor – Fred Sommer
Assistant Editor – Pat Neal
Photography – Norene Miranda
Articles – Mark Paskvan, Pat Neal, John Posey
Layout & Production – Roger Weiner
Printing – Forté Press Corporation, Burlingame
Distribution – Precise Mailing, S. San Francisco

For More Information: www.lionseyeca-nv.org

LEF Focus, Lead Trustees and Need for Advisors (cont.)

each year. If you are a Lion member, your club is a member of the Lions Eye Foundation and you are interested in becoming an Advisor for LEF, please contact your District's Lead Trustee listed below, or Don Stanaway, Executive Director. For specific contact information on the individuals listed below please visit the Lions Eye Foundation web site: www.lionseyeca-nv.org.

Sue Carner, District 4-A1; Lillette Quesnoy, District 4-A2; Dick Kane, District 4-A3; Glenn Dunning, District 4-C1; Wauna Mellen, District 4-C2; Linda Griffin, District 4-C3; Sam Lerner, District 4-C4; Liz Crooke, District 4-C6; Bob Kerth, District 46.

The LEF is also in need of a 3-4 person Marketing Committee to help us understand the changes that will happen if and when the new hospital at the Cathedral Hill site in San Francisco will happen. This committee would take on the task of determining which fundraising projects should take priority and in recommending changes to existing programs or researching new programs. The Marketing Committee would also look at creating the appropriate focus and message to best explain the LEF. This message would be included in articles about the LEF, presentations to member clubs and prospective clubs, and the LEF website and newsletters. It would be ideal if prospective Advisors also have an interest in joining this committee.

ANNUAL MEETING IN SAN FRANCISCO – JULY 14, 2012

All Lions are invited to attend the following functions:

9:30 – 11:45 AM Guest program – Enright room, Main Lobby, CPMC Webster Street
12:00 – 2:00 PM Lunch – Calgary Presbyterian Church, corner Jackson & Fillmore
2:15 – 4:15 PM Board of Trustee Meeting – Conf. Room A, Cafeteria Level

Details, and how to pay for lunch (\$20) will be posted on our website in mid-May.